

D

32

Picc.

Fl.

Htb.

Cl.

Sax. Sop.

Sax. alto

Sax. T.

Sax. Bary.

Bsn.

Cr.

Trp.

Trb.

Tb.

V. 1

V. 2

A.

Vc.

C. B.

39

Picc.

Fl.

Htb.

Cl.

Sax. Sop.

Sax. alto

Sax. T.

Sax. Bary.

Bsn.

Cr.

Trp.

Trb.

Tb.

V. 1

V. 2

A.

Vc.

C. B.

# LA VIE EN ROSE

Concert Vaguement la Jungle

Clarinete en Sib

Edith PIAF

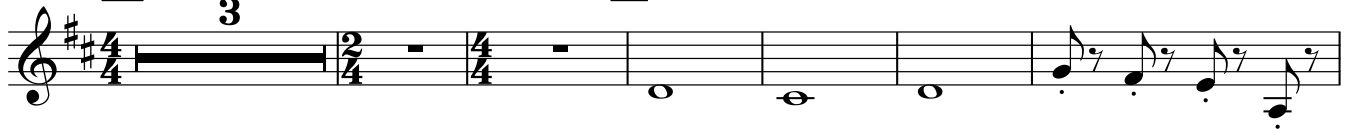
arrangement : Pierre BLOCH

♩ = 90

A

INTRO *a Tempo*

B



10



17



24

C

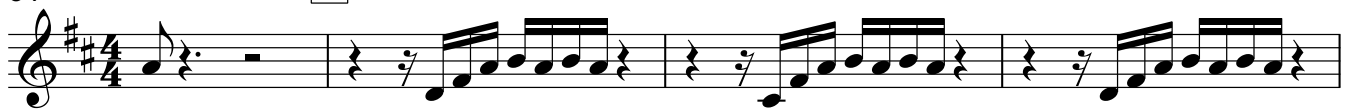


29



34

D



38



42



46



51



Clarinete en Sib

55 **E**

64 **F**

68

72

76 **FIN a Tempo**

Detailed description of the musical score: The score is for a Clarinet in B-flat. It consists of five staves of music. The first staff (measures 55-57) starts with a key signature of two sharps (F# and C#) and a 4/4 time signature. Measure 55 is a whole rest. Measure 56 is a whole rest with a '7' above it. Measure 57 is a quarter note followed by a triplet of eighth notes. The second staff (measures 64-67) starts at measure 64. Measures 64-66 are eighth-note triplets with a '3' above each. Measure 67 is a quarter note followed by two eighth notes. The third staff (measures 68-71) starts at measure 68. Measures 68-70 are eighth-note triplets with a '3' above each. Measure 71 is a quarter note followed by two eighth notes. The fourth staff (measures 72-75) starts at measure 72. Measures 72-74 are eighth-note triplets with a '3' above each. Measure 75 is a quarter note followed by two eighth notes. The fifth staff (measures 76-78) starts at measure 76. Measure 76 is a quarter note followed by two eighth notes. Measure 77 is a whole rest with a '3' above it. Measure 78 is a half note followed by a quarter note. The piece ends with a double bar line.